

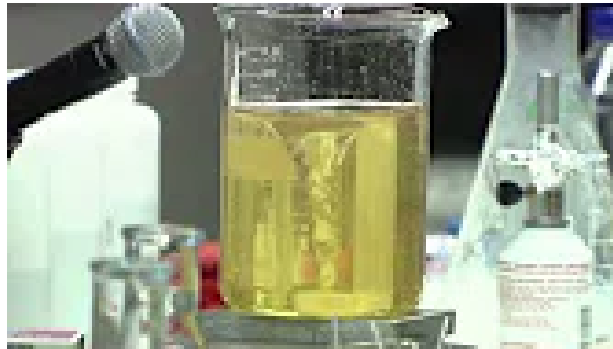
Science based on nonlinear thermodynamics (philosophy of explicit logic)

Static equilibrium, landscape, dynamic equilibrium



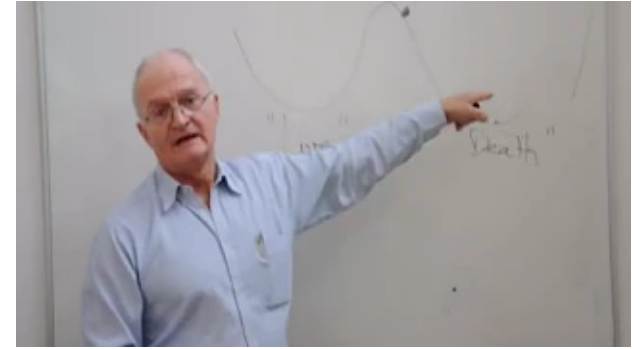
"Shifts in Equilibrium Physics", 2013/01/17, Khan Academy MIT-K12, 4m05s on Youtube

Belousov-Zhabotinsky, non-equilibrium thermodynamics



"Does This Reaction Break the Second Law of Thermodynamics?", 2016/12/13, Royal Institution, 4m04s on Youtube

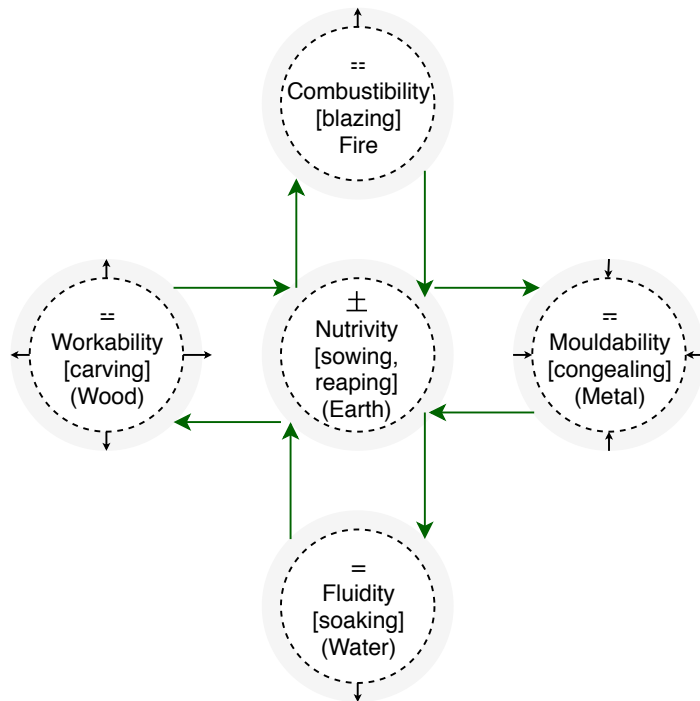
Self-organizing capacity, basins of attraction



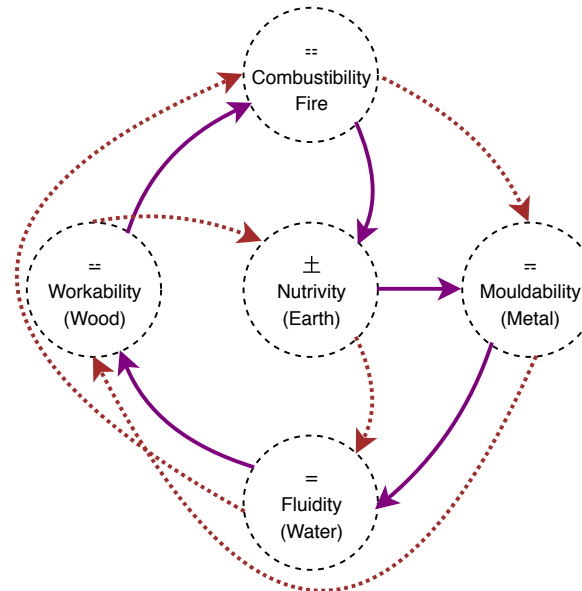
"The Best Explanation to Resilience", Brian Walker, 2009/04/03, Stockholm Resilience Centre, 7m36s on Youtube

Science based on naturalist philosophy (implicit logic)

→ Seasonal cycle



→ Generating sequence
 → Controlling sequence



← Insulting sequence
 → Overacting sequence

